

DLA Piper office design by HofmanDujardin

Amsterdam February 2010 - The office interior of Dutch law firm DLA Piper has been redesigned by Hofman Dujardin Architects. The 10.500m² office is located in the rapidly developing business district “Zuidas” in Amsterdam in The Netherlands.

DLA Piper is the world's largest law firm, with an Amsterdam based office consisting of 130 fee earners and a total 250 employees. The office is divided in a front and back office. The entrance, coffee bar, restaurant, waiting area, boardroom and meeting centre are located in the front office on ground level, mezzanine level and 1st level. The back office is on 2nd and 3rd level, with its working rooms, sharing spaces, bar and library.

Crucial issue in the design strategy is the division of the building into two conceptual atmospheres. The colourful, fresh, modern and the natural, classic and sober. These atmospheres exist parallel to each other.

The first one consist of vivid colours matched with simple, white forms. The second one uses softer colours and is made with natural materials such as wood. It has a more quiet character. This division establishes a clear distinction between the different programs and therefore offers diversity within the building. Hence, it creates a certain richness in materials and offers the possibility of a personal choice between various, contrastive atmospheres in the working environment of DLA Piper.

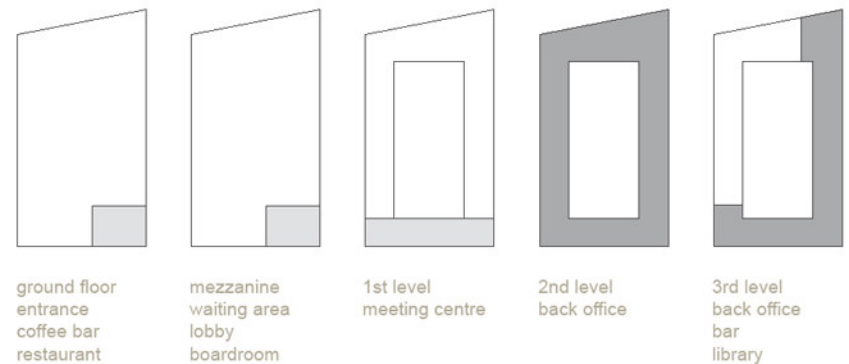




The front office is located on ground level, mezzanine level and 1st level. The first space one experiences when entering the DLA Piper office is the two-storey high entrance. Here, the welcome desk is moved from its previous position to the entrance zone. This object is a strong, basic shape made of Corian and is emphasized by the floor pattern. The monumental glass stairs going up in this space are highlighted by the expressive red carpet which lies underneath.

Adjacent to the entrance the new coffee bar is created. This space mainly consists of a long, sculptural piece of white furniture placed against the wall, with a coffee machine, storage for cups, and a exhibition platform for art objects. This furniture creates the background for the natural wooden bar table and the island with lounge chairs which is placed on a red circular carpet.

“colourful zones are combined with warm textured areas, giving the spaces power and tranquility”





Next to the coffee bar is the restaurant, where natural and colourful areas are mixed and diverse types of seating occur: bench, table and bar table.

The floor plan of the restaurant allows easy rearrangement of the space in order to adapt to different types of use. For example conference or training sessions.

Original floor and ceiling are left unchanged. Only the lighting plan was adjusted to support the flexible use. For better acoustics the walls have been upholstered and curtains are placed.



ground level

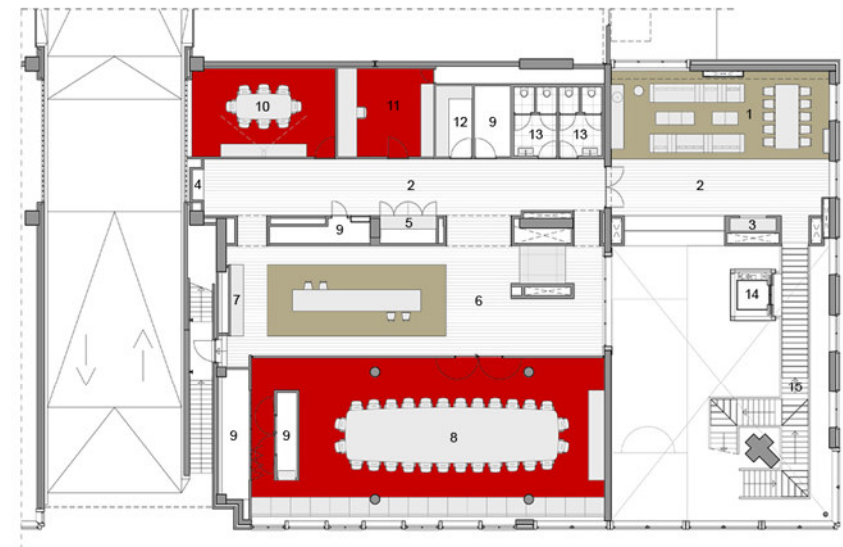
1. entree / entrance
2. ontvangtbalie / reception desc
3. koffiebar / coffee bar
4. garderobe / cloak room
5. restaurant / restaurant
6. keuken / kitchen
7. toiletten / toilets
8. opslag / storage
9. lift / elevator
10. trap / stairs





The mezzanine level consists of open areas (waiting area and lobby), with a natural character, and the contrastive, colourful closed areas (boardroom, video conference room and working room). The position of the boardroom and the lobby is changed in order to optimize its light conditions and visual connections with other parts of the building interior. Through the glass walls of the lobby one can experience the vivid atmosphere of the boardroom as well as visually connect to the entry zone and the waiting area.

Prior to the redesign of Hofman Dujardin, the boardroom was located only with its shorter side oriented to the exterior façade. The architects decided to rotate this room 90 degrees, so that now the long side of this room, with a total length of almost 17 meters, is fully parallel to the façade. This alteration led to a substantial enhancement of daylight conditions in that space.



1. wacht ruimte / waiting area
2. hal / corridor
3. pantry / pantry
4. kunstwerk / art piece
5. garderobe / cloak room
6. lobby / lobby
7. service unit / service unit
8. boardroom / boardroom
9. opslag / storage
10. video conference / video conference
11. werkruimte / study
12. pantry / pantry
13. toiletten / toilets
14. lift / elevator
15. trap / stairs

mezzanine level

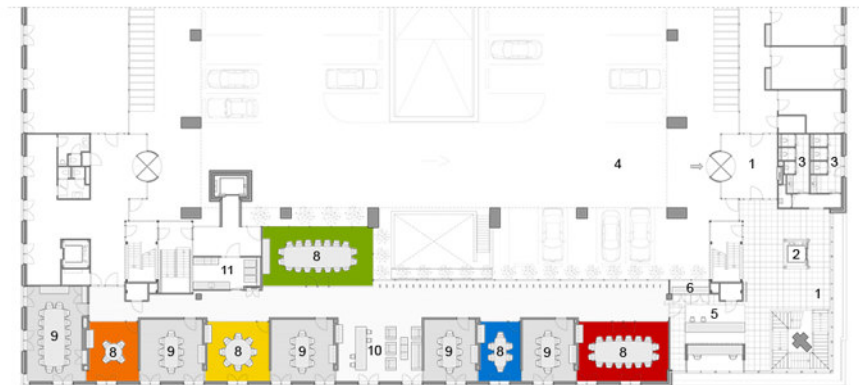




The representative meeting centre of DLA Piper is located on the 1st level. The sequence of open and closed meeting rooms is interrupted by the generous lounge area in the middle. This adds more space to the corridor and brings light to the inside.

The corridor and the closed rooms form the natural zone, while the open meeting rooms create the multicoloured, lively zone. The rooms have different colours, materials and sizes. This allows one to choose a meeting room with an atmosphere that is in accordance with the character of the meeting: big or small, cosy or official, informal or strictly private.

“the transparant colourful meeting rooms let the daylight enter deep into the meeting centre”



meeting centre 1st floor

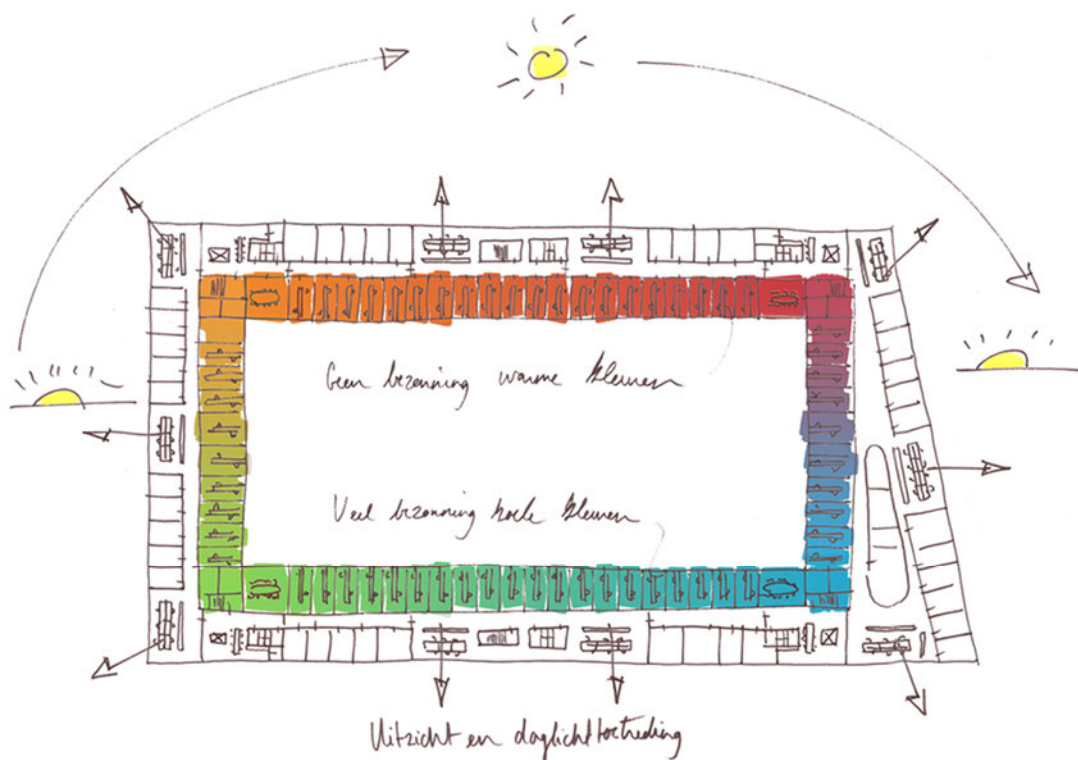
- 1. entrance / entree
- 2. lift / elevator
- 3. toiletten / toilets
- 4. parkeerdek / parking
- 5. ontvangstbalie / reception desc
- 6. garderobe / cloak room
- 7. trap / stairs
- 8. vergaderruimte kleurrijk / meeting room colorful
- 9. vergaderruimte neutraal / meeting room neutral
- 10. break out ruimte / break out room
- 11. service pantry / service pantry





“the diversity in colour, size and privacy gives each meeting room a different atmosphere, offering the client the possibility to choose his or her favorite surrounding”





“the colour scheme is based on the chagement of sunlight”

The back office, positioned on the 2nd and 3rd level, has a very strict zoning: the inner ring of working rooms creates the colourful zone, while the corridor and the outer ring establish the natural one. The workers are given a choice for their working environment according to their preferences: colourful modern or classic neutral.

The most excessive spatial changes made to the existing situation can be found at the corners of the building. Not only were all closed rooms removed from here in order to gain more daylight and open up the space for the new working spots. They also create the common areas, the so called “Sharing Spaces”. These parts of the building contain facilities such as internal meeting rooms, pantries, a small lounge area and restrooms.

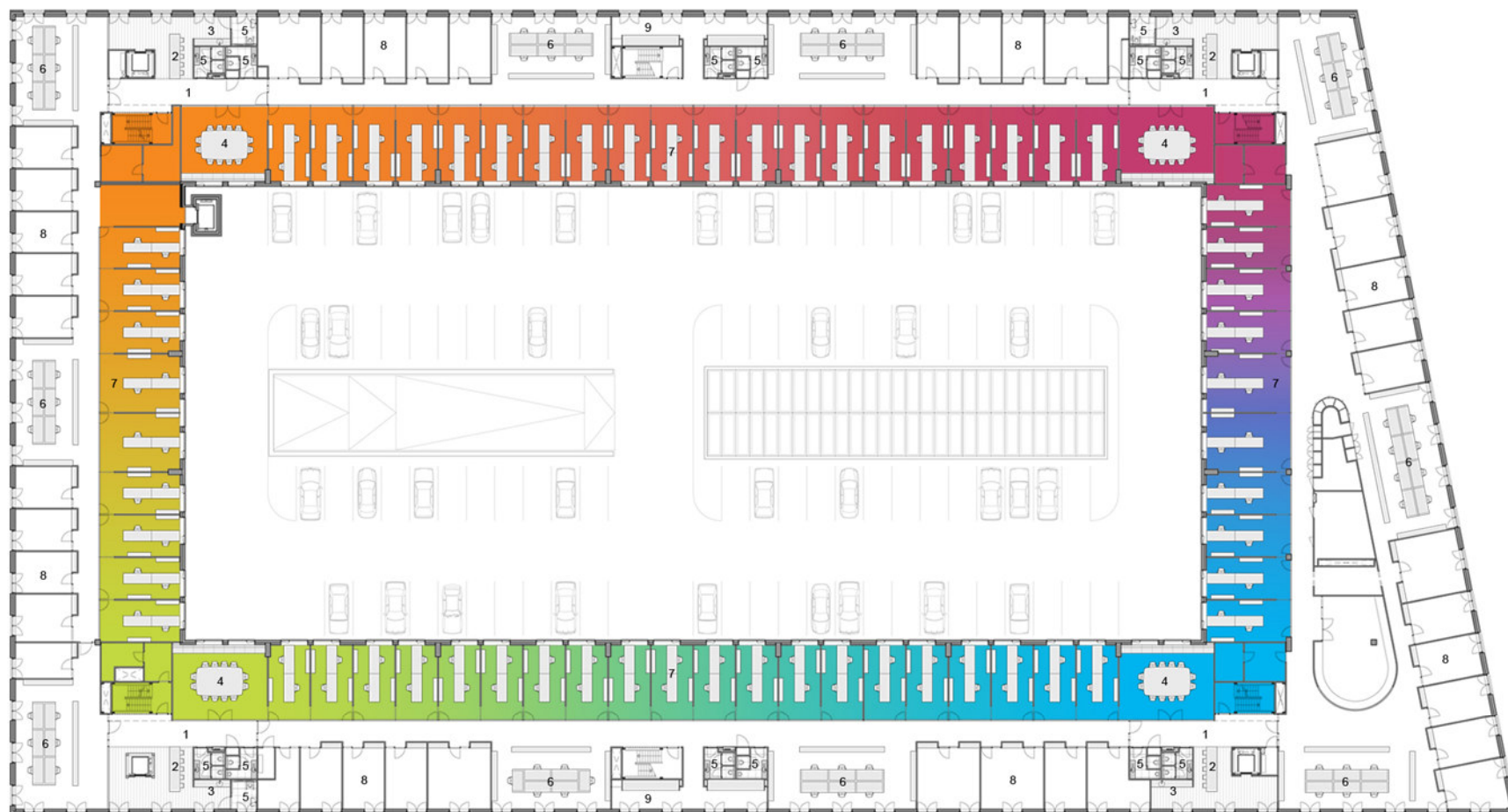
Each of these four corners has a colour which is based on the movement of the sun. The warmer, sunny areas are compensated with blue and green, while the cooler, shaded areas have been enhanced with vivid colours like red and orange. Because of the sun orientation, the warm colours are located on the north side of the building, and the cold colours are on the south side.

The colours are slowly fading into each other. When one walks through the building this change creates an endless gradient throughout the entire floor: red becomes orange, orange becomes green, green becomes blue and blue turns back to red. This improves the orientation and creates a colourful routing through the building.

The middle parts of the corridor zones between the corners of the building, have also been opened. This means that the architect didn't place any closed rooms here, but created open areas with new working spots in open space. As a result, the length of the corridor is broken and daylight brings a pleasant atmosphere inside.

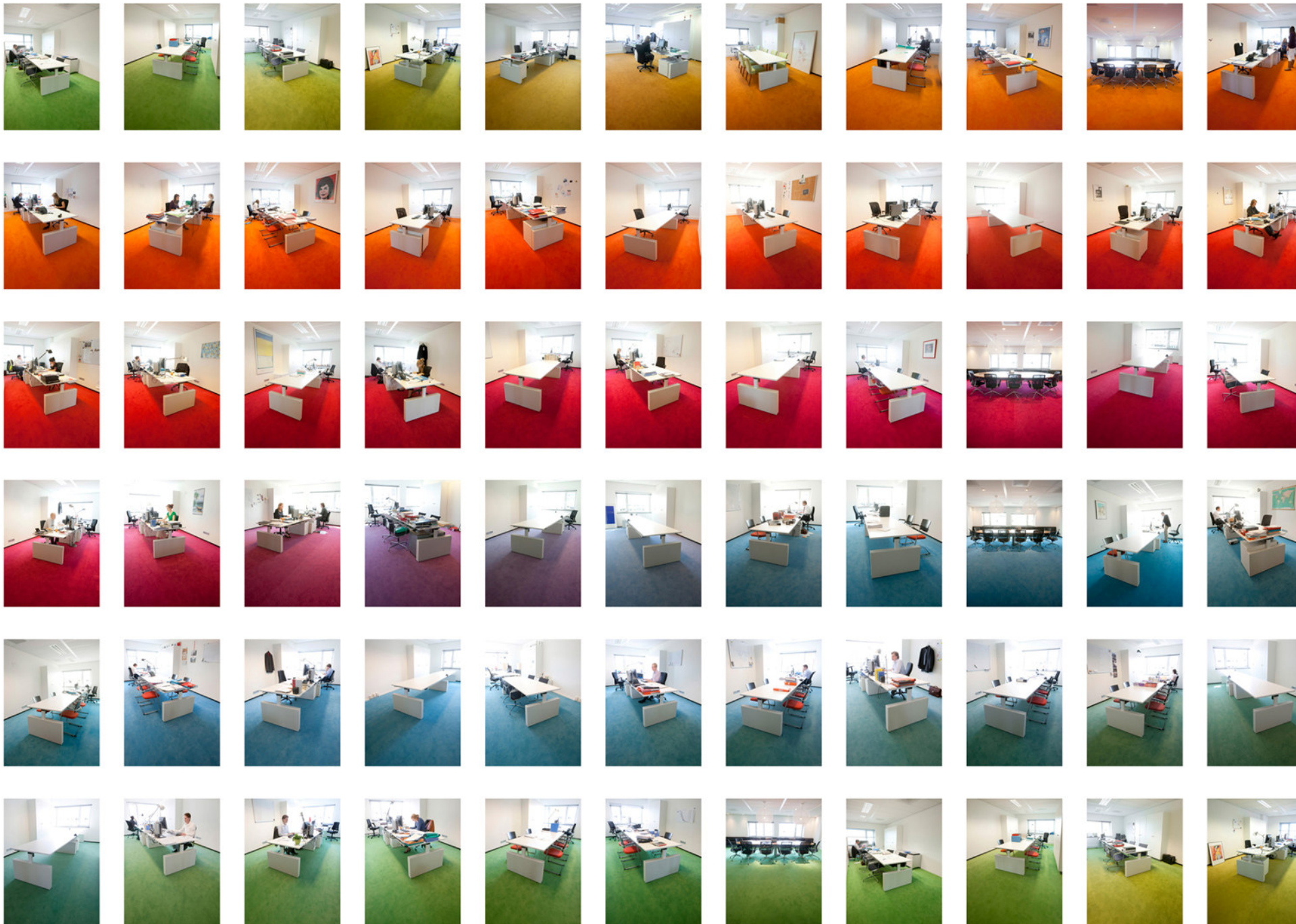
Being replaced from the mezzanine level, the office library is located on the 3rd level. Located on the corner of the building, it offers generous space and a charming view to the surroundings.

The new DLA Piper office interior design creates diversity, adventure and tranquillity for its employees in thoroughly designed spaces that can stand the test of time.



- 1. entree / entrance
- 2. informele ontmoetingsruimte / informal meeting
- 3. pantry / pantry
- 4. vergaderkamer / meeting room
- 5. toiletten / toilets
- 6. open werkplekken / open space working spots
- 7. kantoren kleurrijk / offices colorful
- 8. kantoren neutraal / offices neutral
- 9. repro / repro

2nd level back office



Project Info & Credits

Client	DLA Piper The Netherlands
Period	April 2008 until July 2009
Design	Hofman Dujardin Architects Amsterdam
Project management	IPMMC Consult Utrecht
Contractor	Bouwbedrijf Visser & Hopman Bunschoten
Power supply	Groen & Aldenkamp Woerden
Climate control	Imtech Building Services Amersfoort
Furniture	Merwede interior Hardinxveld-Giessendam
Tables meeting center	Merwede interior Hardinxveld-Giessendam in collaboration with Vitra The Netherlands
Chairs meeting center	Vitra The Netherlands Oudekerk a/d Amstel
Glass walls meeting center	BENE delivered by Westra etc Amsterdam
Work places back office	Koninklijke Ahrend Amsterdam
Curtains	Silent Gliss delivered by Kampschreur Zoeterwoude
Carpet colour	EGE delivered by Onstein Textiel Agenturen
Carpet neutral	Milliken delivered by Westra etc Amsterdam
Corian	Erbi Alphen a/d Rijn
Light recessed and decorative	Ansorg Oudekerk a/d Amstel
Light decorative	MOOOI Amsterdam
Sofas	MOOOI Amsterdam
Fabric sofas	Kvadrat Amsterdam
Photography	Matthijs van Roon Amsterdam

For high resolution photography please contact Hofman Dujardin Architects.

Hofman Dujardin Architects
contact Michiel Hofman
Sumatrakade 737
1098 EE Amsterdam
The Netherlands
office@hofmandujardin.nl
www.hofmandujardin.nl

